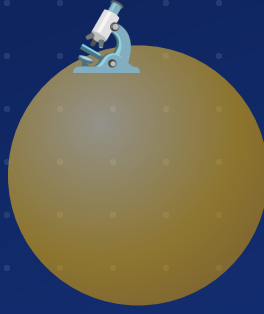


EXAM PREPARATION SERIES



EVERYDAY SCIENCE

MCQs QUESTION BANK

100 Solved Multiple Choice Questions with Highlighted & Ticked Answers — carefully selected from the **Most Important & Most Repeated** Everyday Science topics for competitive examinations.

✓ PPSC

✓ FPSC

✓ NTS

✓ PMS / CSS

100

MCQS SOLVED

10

TOPICS COVERED

100%

ANSWERS TICKED

TABLE OF CONTENTS

10 carefully grouped topics · 100 most important & most repeated MCQs for Everyday Science



Human Body & Health

Questions 1 - 10

10 Qs



Famous Scientists & Discoveries

Questions 11 - 20

10 Qs



Inventions & Inventors

Questions 21 - 30

10 Qs



Vitamins, Minerals & Diseases

Questions 31 - 40

10 Qs



Physics in Everyday Life

Questions 41 - 50

10 Qs



Chemistry in Everyday Life

Questions 51 - 60

10 Qs



Biology & Living World

Questions 61 - 70

10 Qs



Earth, Space & Universe

Questions 71 - 80

10 Qs



Environment & Ecology

Questions 81 - 90

10 Qs



General Science & Latest Trends

Questions 91 - 100

10 Qs

HOW TO USE THIS BOOK

1 Attempt every question first without looking at the answer.

3 Revise the highlighted answers a day before your exam.

2 The correct option is highlighted in green with a ✓ tick.

4 Topics are grouped exactly as they repeat in PPSC / FPSC papers.

Human Body & Health

SECTION 01 | 10 QUESTIONS

1 The normal body temperature of a healthy human is approximately:

A 36°C

B 37°C ✓

C 39°C

D 35°C

Correct Answer: **B** ✓ 37°C

2 The total number of bones in an adult human body is:

A 206 ✓

B 200

C 212

D 198

Correct Answer: **A** ✓ 206

3 Which organ is responsible for pumping blood throughout the body?

A Liver

B Heart ✓

C Kidney

D Lungs

Correct Answer: **B** ✓ Heart

4 The largest organ of the human body is the:

A Liver

B Skin ✓

C Brain

D Heart

Correct Answer: **B** ✓ Skin

5 Which blood group is known as the universal donor?

A AB

B O Negative ✓

C A Positive

D B Negative

Correct Answer: **B** ✓ O Negative

6 The normal pulse (heart) rate of a healthy adult per minute is approximately:

A 40-50

B **60-100** ✓

C 110-130

D 150-160

Correct Answer: B ✓ 60-100

7 Which organ filters blood and produces urine?

A Liver

B **Kidney** ✓

C Pancreas

D Spleen

Correct Answer: B ✓ Kidney

8 The smallest bone in the human body (the stapes) is located in the:

A **Ear** ✓

B Hand

C Foot

D Skull

Correct Answer: A ✓ Ear

9 The human heart has how many chambers?

A 2

B 3

C **4** ✓

D 5

Correct Answer: C ✓ 4

10 Which gland is known as the 'master gland' of the human body?

A Thyroid

B **Pituitary Gland** ✓

C Adrenal Gland

D Pancreas

Correct Answer: B ✓ Pituitary Gland



Famous Scientists & Discoveries

SECTION 02 | 10 QUESTIONS

11 Who discovered the theory/law of gravity?

A Albert Einstein

B Isaac Newton ✓

C Galileo Galilei

D Nikola Tesla

Correct Answer: **B** ✓ *Isaac Newton*

12 Who is known as the father of modern physics?

A Isaac Newton

B Albert Einstein ✓

C Galileo Galilei

D Stephen Hawking

Correct Answer: **B** ✓ *Albert Einstein*

13 Who discovered Penicillin, the first widely used antibiotic?

A Alexander Fleming ✓

B Louis Pasteur

C Edward Jenner

D Robert Koch

Correct Answer: **A** ✓ *Alexander Fleming*

14 Who proposed the theory of evolution by natural selection?

A Gregor Mendel

B Charles Darwin ✓

C Carl Linnaeus

D Louis Pasteur

Correct Answer: **B** ✓ *Charles Darwin*

15 Who is credited with the discovery of X-rays?

A Wilhelm Roentgen ✓

B Marie Curie

C Ernest Rutherford

D Niels Bohr

Correct Answer: **A** ✓ *Wilhelm Roentgen*

16 Who discovered the principle of buoyancy (floating bodies)?

A Archimedes ✓

B Blaise Pascal

C Isaac Newton

D Galileo Galilei

Correct Answer: **A** ✓ *Archimedes*

17 Who is known as the father of the modern periodic table?

A Antoine Lavoisier

B Dmitri Mendeleev ✓

C John Dalton

D Robert Boyle

Correct Answer: **B** ✓ *Dmitri Mendeleev*

18 Marie Curie won the Nobel Prize mainly for her pioneering work on:

A Gravity

B Radioactivity ✓

C Evolution

D Genetics

Correct Answer: **B** ✓ *Radioactivity*

19 Who is credited with inventing the telephone?

A Thomas Edison

B Alexander Graham Bell ✓

C Nikola Tesla

D Guglielmo Marconi

Correct Answer: **B** ✓ *Alexander Graham Bell*

20 Who discovered the circulation of blood in the human body?

A William Harvey ✓

B Edward Jenner

C Louis Pasteur

D Robert Hooke

Correct Answer: **A** ✓ *William Harvey*

Inventions & Inventors

SECTION 03 | 10 QUESTIONS

21 Who is credited with inventing the practical electric light bulb?

A Nikola Tesla

B Thomas Edison ✓

C Alexander Graham Bell

D James Watt

Correct Answer: **B** ✓ *Thomas Edison*

22 The steam engine was significantly improved/invented by:

A James Watt ✓

B Thomas Edison

C Alexander Fleming

D Isaac Newton

Correct Answer: **A** ✓ *James Watt*

23 Who is credited with inventing the World Wide Web?

A Bill Gates

B Tim Berners-Lee ✓

C Steve Jobs

D Larry Page

Correct Answer: **B** ✓ *Tim Berners-Lee*

24 The printing press was invented by:

A Johannes Gutenberg ✓

B Thomas Edison

C Leonardo da Vinci

D Galileo Galilei

Correct Answer: **A** ✓ *Johannes Gutenberg*

25 Who is widely credited with inventing the radio?

A Guglielmo Marconi ✓

B Alexander Graham Bell

C Thomas Edison

D Nikola Tesla

Correct Answer: **A** ✓ *Guglielmo Marconi*

26 Dynamite was invented by:

A Alfred Nobel ✓

B Thomas Edison

C James Watt

D Albert Einstein

Correct Answer: **A** ✓ *Alfred Nobel*

27 The first powered airplane was invented by the:

A Wright Brothers ✓

B Henry Ford

C Karl Benz

D Nikola Tesla

Correct Answer: **A** ✓ *Wright Brothers*

28 The microscope is most closely associated with the early work of:

A Antonie van Leeuwenhoek ✓

B Galileo Galilei

C Robert Hooke

D Isaac Newton

Correct Answer: **A** ✓ *Antonie van Leeuwenhoek*

29 Who developed the first vaccine, for smallpox?

A Edward Jenner ✓

B Louis Pasteur

C Alexander Fleming

D Robert Koch

Correct Answer: **A** ✓ *Edward Jenner*

30 Who is widely regarded as the world's first computer programmer?

A Ada Lovelace ✓

B Charles Babbage

C Alan Turing

D Grace Hopper

Correct Answer: **A** ✓ *Ada Lovelace*

Vitamins, Minerals & Diseases

SECTION 04 | 10 QUESTIONS

31 Deficiency of Vitamin C in the body causes: A Night Blindness B Scurvy ✓ C Rickets D BeriberiCorrect Answer: **B** ✓ Scurvy**32** Deficiency of Vitamin D in the body causes: A Scurvy B Rickets ✓ C Anemia D GoiterCorrect Answer: **B** ✓ Rickets**33** Vitamin A deficiency primarily causes: A Night Blindness ✓ B Scurvy C Rickets D BeriberiCorrect Answer: **A** ✓ Night Blindness**34** Deficiency of iron in the body leads to: A Anemia ✓ B Scurvy C Goiter D RicketsCorrect Answer: **A** ✓ Anemia**35** Deficiency of iodine in the diet leads to which disease? A Goiter ✓ B Scurvy C Rickets D AnemiaCorrect Answer: **A** ✓ Goiter

36 Which vitamin is essential for normal blood clotting?

A Vitamin A

B Vitamin C

C Vitamin K ✓

D Vitamin E

Correct Answer: **C** ✓ *Vitamin K*

37 Malaria is caused by which type of organism?

A Bacteria

B Virus

C Plasmodium (a parasite) ✓

D Fungus

Correct Answer: **C** ✓ *Plasmodium (a parasite)*

38 Diabetes is primarily linked to which organ and hormone?

A Liver and Bile

B Pancreas and Insulin ✓

C Kidney and Urea

D Heart and Blood

Correct Answer: **B** ✓ *Pancreas and Insulin*

39 Which vitamin is naturally produced in the human body upon exposure to sunlight?

A Vitamin A

B Vitamin C

C Vitamin D ✓

D Vitamin B12

Correct Answer: **C** ✓ *Vitamin D*

40 AIDS (Acquired Immunodeficiency Syndrome) is caused by:

A Bacteria

B Fungus

C HIV (a virus) ✓

D Protozoa

Correct Answer: **C** ✓ *HIV (a virus)*

Physics in Everyday Life

SECTION 05 | 10 QUESTIONS

41 The SI unit of force is the: A Joule B **Newton** ✓ C Watt D PascalCorrect Answer: **B** ✓ *Newton***42** The SI unit of electric current is the: A Volt B **Ampere** ✓ C Ohm D WattCorrect Answer: **B** ✓ *Ampere***43** Sound waves travel fastest through: A Air B Water C Vacuum D **Solids** ✓Correct Answer: **D** ✓ *Solids***44** The speed of light in a vacuum is approximately: A **300,000 km/s** ✓ B 150,000 km/s C 500,000 km/s D 100,000 km/sCorrect Answer: **A** ✓ *300,000 km/s***45** Which instrument is used to measure atmospheric pressure? A Thermometer B **Barometer** ✓ C Hygrometer D AnemometerCorrect Answer: **B** ✓ *Barometer*

46 The freezing point of water on the Celsius scale is:

A 0°C ✓

B 100°C

C -10°C

D 32°C

Correct Answer: **A** ✓ 0°C

47 The boiling point of water at sea level is:

A 90°C

B 100°C ✓

C 110°C

D 80°C

Correct Answer: **B** ✓ 100°C

48 A device used to measure temperature is called a:

A Barometer

B Thermometer ✓

C Hygrometer

D Anemometer

Correct Answer: **B** ✓ Thermometer

49 The unit used to measure electrical resistance is the:

A Ohm ✓

B Volt

C Ampere

D Watt

Correct Answer: **A** ✓ Ohm

50 Which of the following is NOT considered a form of energy?

A Kinetic Energy

B Potential Energy

C Mass ✓

D Thermal Energy

Correct Answer: **C** ✓ Mass

Chemistry in Everyday Life

SECTION 06 | 10 QUESTIONS

51 The chemical formula of water is:

A H₂O ✓

B CO₂

C NaCl

D O₂

Correct Answer: **A** ✓ H₂O

52 The most abundant gas in the Earth's atmosphere is:

A Oxygen

B Nitrogen ✓

C Carbon Dioxide

D Hydrogen

Correct Answer: **B** ✓ Nitrogen

53 Common table salt is chemically known as:

A Sodium Bicarbonate

B Sodium Chloride ✓

C Calcium Carbonate

D Potassium Chloride

Correct Answer: **B** ✓ Sodium Chloride

54 The chemical symbol for gold is:

A Gd

B Au ✓

C Ag

D Go

Correct Answer: **B** ✓ Au

55 Fire extinguishers commonly use which gas to put out fires?

A Oxygen

B Carbon Dioxide ✓

C Nitrogen

D Hydrogen

Correct Answer: **B** ✓ Carbon Dioxide

56 Rusting of iron is a chemical example of:

A Oxidation ✓

B Reduction

C Neutralization

D Sublimation

Correct Answer: **A** ✓ *Oxidation*

57 The pH value of pure water is:

A 0

B 7 ✓

C 14

D 5

Correct Answer: **B** ✓ *7*

58 Which gas is commonly known as 'laughing gas'?

A Nitrous Oxide ✓

B Carbon Monoxide

C Methane

D Helium

Correct Answer: **A** ✓ *Nitrous Oxide*

59 The chemical name for ordinary vinegar's active compound is:

A Acetic Acid ✓

B Citric Acid

C Sulfuric Acid

D Lactic Acid

Correct Answer: **A** ✓ *Acetic Acid*

60 Diamond is a naturally occurring pure form of which element?

A Silicon

B Carbon ✓

C Sulfur

D Iron

Correct Answer: **B** ✓ *Carbon*

Biology & Living World

SECTION 07 | 10 QUESTIONS

61 Photosynthesis mainly occurs in which part of a plant?

A Roots

B Leaves ✓

C Stem

D Flowers

Correct Answer: **B** ✓ *Leaves*

62 The basic structural and functional unit of life is the:

A Tissue

B Cell ✓

C Organ

D Organelle

Correct Answer: **B** ✓ *Cell*

63 Which gas do plants absorb from the atmosphere during photosynthesis?

A Oxygen

B Carbon Dioxide ✓

C Nitrogen

D Hydrogen

Correct Answer: **B** ✓ *Carbon Dioxide*

64 Which organelle is known as the 'powerhouse' of the cell?

A Nucleus

B Mitochondria ✓

C Ribosome

D Golgi Body

Correct Answer: **B** ✓ *Mitochondria*

65 DNA stands for:

A Deoxyribonucleic Acid ✓

B Diribonucleic Acid

C Deoxyribose Nuclear Acid

D Dual Nucleic Acid

Correct Answer: **A** ✓ *Deoxyribonucleic Acid*

66 Which part of a plant is mainly responsible for absorbing water and minerals?

A Leaves

B Stem

C **Roots** ✓

D Flowers

Correct Answer: C ✓ *Roots*

67 The scientific study of living organisms is called:

A Physics

B **Biology** ✓

C Chemistry

D Geology

Correct Answer: B ✓ *Biology*

68 Which blood cells primarily help the body fight infections?

A Red Blood Cells

B **White Blood Cells** ✓

C Platelets

D Plasma

Correct Answer: B ✓ *White Blood Cells*

69 Which organ in a flowering plant is mainly responsible for reproduction?

A Leaf

B **Flower** ✓

C Root

D Stem

Correct Answer: B ✓ *Flower*

70 The process by which plants lose water vapor through their leaves is called:

A Respiration

B **Transpiration** ✓

C Photosynthesis

D Excretion

Correct Answer: B ✓ *Transpiration*

Earth, Space & Universe

SECTION 08 | 10 QUESTIONS

71 The planet closest to the Sun is:

A Venus

B Earth

C Mercury ✓

D Mars

Correct Answer: C ✓ Mercury

72 The largest planet in our solar system is:

A Saturn

B Jupiter ✓

C Neptune

D Earth

Correct Answer: B ✓ Jupiter

73 The Earth completes one full rotation on its axis in approximately:

A 12 hours

B 24 hours ✓

C 48 hours

D 365 days

Correct Answer: B ✓ 24 hours

74 The natural satellite of the Earth is the:

A Sun

B Moon ✓

C Mars

D Venus

Correct Answer: B ✓ Moon

75 Which planet is commonly known as the 'Red Planet'?

A Mars ✓

B Venus

C Jupiter

D Saturn

Correct Answer: A ✓ Mars

76 The layer of the atmosphere where most weather phenomena occur is the:

A Stratosphere

B Troposphere ✓

C Mesosphere

D Thermosphere

Correct Answer: **B** ✓ *Troposphere*

77 The ozone layer primarily protects the Earth from:

A Visible Light

B Ultraviolet Rays ✓

C Infrared Rays

D Radio Waves

Correct Answer: **B** ✓ *Ultraviolet Rays*

78 The smallest planet in our solar system is:

A Mars

B Mercury ✓

C Venus

D Earth

Correct Answer: **B** ✓ *Mercury*

79 The Earth takes approximately how many days to complete one revolution around the Sun?

A 24

B 30

C 365 ✓

D 12

Correct Answer: **C** ✓ *365*

80 The galaxy that contains our solar system is called the:

A Andromeda

B Milky Way ✓

C Whirlpool Galaxy

D Sombrero Galaxy

Correct Answer: **B** ✓ *Milky Way*

Environment & Ecology

SECTION 09 | 10 QUESTIONS

81 The gradual rise in Earth's average temperature is commonly known as:

A Global Warming ✓

B Acid Rain

C Ozone Depletion

D Eutrophication

Correct Answer: **A** ✓ *Global Warming*

82 Which gas is primarily responsible for the greenhouse effect?

A Oxygen

B Carbon Dioxide ✓

C Nitrogen

D Hydrogen

Correct Answer: **B** ✓ *Carbon Dioxide*

83 The process of converting waste material into reusable material is called:

A Recycling ✓

B Pollution

C Combustion

D Decomposition

Correct Answer: **A** ✓ *Recycling*

84 Acid rain is primarily caused by emissions of:

A Carbon Dioxide and Oxygen

B Sulfur Dioxide and Nitrogen Oxides ✓

C Methane and Helium

D Nitrogen and Hydrogen

Correct Answer: **B** ✓ *Sulfur Dioxide and Nitrogen Oxides*

85 Which renewable energy source is obtained directly from sunlight?

A Solar Energy ✓

B Fossil Fuel

C Nuclear Energy

D Coal

Correct Answer: **A** ✓ *Solar Energy*

86 Large-scale deforestation primarily leads to:

A Increased rainfall

B Soil erosion and loss of biodiversity ✓

C Decreased carbon dioxide levels

D Increased oxygen levels

Correct Answer: **B** ✓ *Soil erosion and loss of biodiversity*

87 The scientific study of the relationship between living organisms and their environment is called:

A Biology

B Ecology ✓

C Geology

D Zoology

Correct Answer: **B** ✓ *Ecology*

88 Which of the following is a non-renewable source of energy?

A Solar Energy

B Wind Energy

C Coal ✓

D Hydropower

Correct Answer: **C** ✓ *Coal*

89 World Environment Day is observed every year on:

A 22nd April

B 5th June ✓

C 8th March

D 16th September

Correct Answer: **B** ✓ *5th June*

90 Which layer of the Earth's atmosphere protects living things from harmful ultraviolet rays?

A Troposphere

B Ozone Layer ✓

C Mesosphere

D Ionosphere

Correct Answer: **B** ✓ *Ozone Layer*

General Science & Latest Trends

SECTION 10 | 10 QUESTIONS

91 The branch of biology dealing with heredity and genetic variation is called:

A Genetics ✓

B Ecology

C Anatomy

D Physiology

Correct Answer: **A** ✓ *Genetics*

92 Which scientist is best known for the Theory of Relativity?

A Isaac Newton

B Albert Einstein ✓

C Niels Bohr

D Max Planck

Correct Answer: **B** ✓ *Albert Einstein*

93 The process of a liquid turning into vapor through heating is called:

A Condensation

B Evaporation ✓

C Sublimation

D Freezing

Correct Answer: **B** ✓ *Evaporation*

94 Which element is primarily used as fuel to generate nuclear energy?

A Coal

B Uranium ✓

C Petroleum

D Natural Gas

Correct Answer: **B** ✓ *Uranium*

95 The instrument used to detect and measure earthquakes is called a:

A Barometer

B Seismograph ✓

C Thermometer

D Hygrometer

Correct Answer: **B** ✓ *Seismograph*

96 Stem cells are mainly notable for their unique ability to:

A Produce energy directly

B Differentiate into various specialized cell types ✓

C Fight infections directly

D Transport oxygen in blood

Correct Answer: **B** ✓ *Differentiate into various specialized cell types*

97 Which modern technology is used for precise editing of genes?

A CRISPR ✓

B Blockchain

C 5G

D Cloud Computing

Correct Answer: **A** ✓ *CRISPR*

98 The first artificial satellite ever launched into space was:

A Apollo 11

B Sputnik 1 ✓

C Hubble Telescope

D Voyager 1

Correct Answer: **B** ✓ *Sputnik 1*

99 Which vaccine technology became widely known worldwide during the COVID-19 pandemic?

A mRNA Vaccine ✓

B Live Attenuated Vaccine only

C DNA Plasmid Vaccine only

D Toxoid Vaccine only

Correct Answer: **A** ✓ *mRNA Vaccine*

100 The branch of science dealing with the study of matter, energy and their interactions is called:

A Biology

B Physics ✓

C Chemistry

D Geology

Correct Answer: **B** ✓ *Physics*