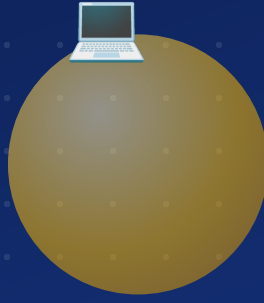


EXAM PREPARATION SERIES



COMPUTER STUDIES

MCQs QUESTION BANK

100 Solved Multiple Choice Questions with Highlighted & Ticked Answers — carefully selected from the **Most Important & Most Repeated** topics for competitive examinations.

✓ PPSC

✓ FPSC

✓ NTS

✓ PMS / CSS

100

MCQS SOLVED

10

TOPICS COVERED

100%

ANSWERS TICKED

TABLE OF CONTENTS

10 carefully grouped topics · 100 most important & most repeated MCQs for Computer Studies



Fundamentals of Computers

Questions 1 - 10

10 Qs



Computer Hardware

Questions 11 - 20

10 Qs



Software & Operating Systems

Questions 21 - 30

10 Qs



Input & Output Devices

Questions 31 - 40

10 Qs



Memory & Storage Devices

Questions 41 - 50

10 Qs



Networking & Internet

Questions 51 - 60

10 Qs



MS Office & Applications

Questions 61 - 70

10 Qs



Number Systems & Programming

Questions 71 - 80

10 Qs



Abbreviations & Key Terms

Questions 81 - 90

10 Qs



Latest Trends & General Awareness

Questions 91 - 100

10 Qs

HOW TO USE THIS BOOK

1 Attempt every question first without looking at the answer.

3 Revise the highlighted answers a day before your exam.

2 The correct option is highlighted in green with a ✓ tick.

4 Topics are grouped exactly as they repeat in PPSC / FPSC papers.

Fundamentals of Computers

SECTION 01 | 10 QUESTIONS

1 What does CPU stand for?

A Central Processing Unit ✓

B Central Process Unit

C Computer Personal Unit

D Central Processor Unit

Correct Answer: **A** ✓ *Central Processing Unit*

2 Who is known as the Father of Modern Computers?

A Charles Babbage ✓

B Alan Turing

C Bill Gates

D Blaise Pascal

Correct Answer: **A** ✓ *Charles Babbage*

3 The first electronic general-purpose computer was named:

A ENIAC ✓

B UNIVAC

C EDVAC

D IBM 701

Correct Answer: **A** ✓ *ENIAC*

4 Which generation of computers used transistors?

A First Generation

B Second Generation ✓

C Third Generation

D Fourth Generation

Correct Answer: **B** ✓ *Second Generation*

5 Which generation of computers introduced the microprocessor?

A Second Generation

B Third Generation

C Fourth Generation ✓

D Fifth Generation

Correct Answer: **C** ✓ *Fourth Generation*

6 IC stands for:

A Integrated Circuit ✓

B Internal Circuit

C Integrated Computer

D Internal Computer

Correct Answer: **A** ✓ *Integrated Circuit*

7 Artificial Intelligence is mainly associated with which generation of computers?

A Third Generation

B Fourth Generation

C Fifth Generation ✓

D Second Generation

Correct Answer: **C** ✓ *Fifth Generation*

8 The basic components of a computer system are:

A Input, Output, Memory and CPU ✓

B Hardware only

C Software only

D Monitor and Keyboard only

Correct Answer: **A** ✓ *Input, Output, Memory and CPU*

9 Who invented the Analytical Engine?

A Charles Babbage ✓

B John von Neumann

C Ada Lovelace

D Alan Turing

Correct Answer: **A** ✓ *Charles Babbage*

10 The smallest unit of data in a computer is called a:

A Byte

B Bit ✓

C Nibble

D Word

Correct Answer: **B** ✓ *Bit*

Computer Hardware

SECTION 02 | 10 QUESTIONS

11 The 'brain' of the computer is the:

A RAM

B CPU ✓

C ALU

D Hard Disk

Correct Answer: **B** ✓ CPU

12 ALU stands for:

A Arithmetic Logic Unit ✓

B Array Logic Unit

C Arithmetic Limited Unit

D Advanced Logic Unit

Correct Answer: **A** ✓ Arithmetic Logic Unit

13 Which unit controls and coordinates all activities of a computer?

A Control Unit ✓

B ALU

C Memory Unit

D Register

Correct Answer: **A** ✓ Control Unit

14 The motherboard is also referred to as:

A System Board

B Main Board

C Both System Board and Main Board ✓

D Circuit Board only

Correct Answer: **C** ✓ Both System Board and Main Board

15 Which device converts AC power into DC for internal computer use?

A UPS

B SMPS ✓

C Inverter

D Generator

Correct Answer: **B** ✓ SMPS

16 CPU clock speed is measured in:

A Bytes

B Hertz ✓

C Pixels

D Bits

Correct Answer: **B** ✓ *Hertz*

17 Which of the following is a pointing device?

A Mouse ✓

B Keyboard

C Scanner

D Printer

Correct Answer: **A** ✓ *Mouse*

18 Which port/interface is most commonly used today to connect peripherals like printers?

A USB ✓

B PS/2

C Serial Port

D Parallel Port

Correct Answer: **A** ✓ *USB*

19 Which component houses the CPU, RAM, and other circuitry?

A Motherboard ✓

B Power Supply

C Hard Disk

D RAM

Correct Answer: **A** ✓ *Motherboard*

20 SMPS stands for:

A Switched Mode Power Supply ✓

B System Mode Power Supply

C Switch Mode Processor Supply

D Standard Mode Power Source

Correct Answer: **A** ✓ *Switched Mode Power Supply*

Software & Operating Systems

SECTION 03 | 10 QUESTIONS

21 Which of the following is an operating system?

A MS Word

B Windows ✓

C Excel

D Photoshop

Correct Answer: **B** ✓ *Windows*

22 Which of the following is NOT an operating system?

A Linux

B Windows

C MS Office ✓

D MacOS

Correct Answer: **C** ✓ *MS Office*

23 The widely used early operating system on IBM-compatible PCs was:

A DOS ✓

B Windows

C Unix

D Linux

Correct Answer: **A** ✓ *DOS*

24 Which operating system is open-source?

A Windows

B Linux ✓

C MacOS

D DOS

Correct Answer: **B** ✓ *Linux*

25 Software that directly controls and manages computer hardware is called:

A Application Software

B System Software ✓

C Utility Software only

D Firmware only

Correct Answer: **B** ✓ *System Software*

26 An antivirus program is best classified as:

A System Software

B Utility Software ✓

C Application Software

D Firmware

Correct Answer: B ✓ Utility Software

27 Which of the following is an example of application software?

A MS Excel ✓

B Windows 11

C Device Driver

D BIOS

Correct Answer: A ✓ MS Excel

28 A program that translates the entire source code at once before execution is a:

A Interpreter

B Compiler ✓

C Assembler

D Linker

Correct Answer: B ✓ Compiler

29 A program that translates and executes source code line by line is a/an:

A Compiler

B Interpreter ✓

C Assembler

D Loader

Correct Answer: B ✓ Interpreter

30 BIOS stands for:

A Basic Input Output System ✓

B Binary Input Output System

C Basic Internal Output System

D Basic Input Output Software

Correct Answer: A ✓ Basic Input Output System

Input & Output Devices

SECTION 04 | 10 QUESTIONS

31 Which of the following is an input device?

A Monitor

B Printer

C Keyboard ✓

D Speaker

Correct Answer: C ✓ Keyboard

32 Which of the following is an output device?

A Scanner

B Mouse

C Monitor ✓

D Keyboard

Correct Answer: C ✓ Monitor

33 OCR stands for:

A Optical Character Recognition ✓

B Optical Code Recognition

C Online Character Recognition

D Optical Character Reader

Correct Answer: A ✓ Optical Character Recognition

34 Which device converts a hard copy document into a soft (digital) copy?

A Printer

B Scanner ✓

C Plotter

D Monitor

Correct Answer: B ✓ Scanner

35 A device that produces a hard copy of output is a:

A Printer ✓

B Monitor

C Speaker

D Mouse

Correct Answer: A ✓ Printer

36 Which type of printer uses a laser beam to produce output?

A Dot Matrix Printer

B Inkjet Printer

C Laser Printer ✓

D Thermal Printer

Correct Answer: C ✓ Laser Printer

37 A joystick is mainly used for:

A Typing text

B Printing documents

C Gaming and simulation control ✓

D Scanning images

Correct Answer: C ✓ Gaming and simulation control

38 Which device is used to input sound/voice into a computer?

A Microphone ✓

B Speaker

C Webcam

D Scanner

Correct Answer: A ✓ Microphone

39 A light pen is primarily used to:

A Print documents

B Draw or select directly on the screen ✓

C Scan images

D Produce sound

Correct Answer: B ✓ Draw or select directly on the screen

40 Which of the following acts as BOTH an input and an output device?

A Touch Screen ✓

B Keyboard

C Mouse

D Printer

Correct Answer: A ✓ Touch Screen

Memory & Storage Devices

SECTION 05 | 10 QUESTIONS

41 RAM stands for:

- A Random Access Memory** ✓
- B Read Access Memory
- C Random Access Module
- D Read Only Memory

Correct Answer: **A** ✓ *Random Access Memory*

42 Which type of memory is volatile (loses data when power is off)?

- A ROM
- B RAM** ✓
- C Hard Disk
- D Flash Drive

Correct Answer: **B** ✓ *RAM*

43 Which type of memory is non-volatile?

- A RAM
- B Cache Memory
- C ROM** ✓
- D Register

Correct Answer: **C** ✓ *ROM*

44 1 Byte is equal to:

- A 4 bits
- B 8 bits** ✓
- C 16 bits
- D 2 bits

Correct Answer: **B** ✓ *8 bits*

45 Which is the fastest type of memory in a computer system?

- A RAM
- B Cache Memory
- C Hard Disk
- D CPU Registers** ✓

Correct Answer: **D** ✓ *CPU Registers*

46 1 Kilobyte (KB) is equal to:

A 1000 bytes

B 1024 bytes ✓

C 1024 KB

D 100 bytes

Correct Answer: **B** ✓ 1024 bytes

47 Which storage device primarily uses magnetic technology?

A Hard Disk Drive ✓

B CD

C DVD

D Blu-ray Disk

Correct Answer: **A** ✓ Hard Disk Drive

48 CD stands for:

A Compact Disk ✓

B Computer Disk

C Compressed Disk

D Central Disk

Correct Answer: **A** ✓ Compact Disk

49 Among the following, which typically offers the largest storage capacity?

A CD

B DVD

C Blu-ray Disk ✓

D Floppy Disk

Correct Answer: **C** ✓ Blu-ray Disk

50 A USB flash/pen drive works on which technology?

A Magnetic Technology

B Optical Technology

C Flash (Solid-State) Memory ✓

D Mechanical Technology

Correct Answer: **C** ✓ Flash (Solid-State) Memory

Networking & Internet

SECTION 06 | 10 QUESTIONS

51 WWW stands for:

 A World Wide Web ✓ B World Wide Wire C Wide World Web D World Web WideCorrect Answer: **A** ✓ *World Wide Web*

52 Who is credited as the inventor of the World Wide Web?

 A Bill Gates B Tim Berners-Lee ✓ C Steve Jobs D Mark ZuckerbergCorrect Answer: **B** ✓ *Tim Berners-Lee*

53 HTTP stands for:

 A HyperText Transfer Protocol ✓ B HyperText Transmission Protocol C High Transfer Text Protocol D Hyper Transfer Text ProcessCorrect Answer: **A** ✓ *HyperText Transfer Protocol*

54 URL stands for:

 A Uniform Resource Locator ✓ B Universal Resource Locator C Uniform Reference Locator D Universal Reference LinkCorrect Answer: **A** ✓ *Uniform Resource Locator*

55 Which protocol is primarily used for sending e-mails?

 A HTTP B FTP C SMTP ✓ D TCPCorrect Answer: **C** ✓ *SMTP*

56 LAN stands for:

A Local Area Network ✓

B Large Area Network

C Local Access Network

D Limited Area Network

Correct Answer: **A** ✓ *Local Area Network*

57 WAN stands for:

A Wide Area Network ✓

B Wireless Area Network

C Web Area Network

D Wired Area Network

Correct Answer: **A** ✓ *Wide Area Network*

58 Which networking device connects multiple different networks together and directs data traffic?

A Router ✓

B Modem

C Switch

D Hub

Correct Answer: **A** ✓ *Router*

59 IP (as in IP Address) stands for:

A Internet Protocol ✓

B Internal Protocol

C Internet Process

D International Protocol

Correct Answer: **A** ✓ *Internet Protocol*

60 Which of the following is an example of a web browser?

A Google Chrome ✓

B MS Word

C Windows

D MS Excel

Correct Answer: **A** ✓ *Google Chrome*

MS Office & Applications

SECTION 07 | 10 QUESTIONS

61 Which file extension is used for a Microsoft Word document (modern format)?

A .xlsx

B .docx ✓

C .pptx

D .pdf

Correct Answer: **B** ✓ .docx

62 In MS Word, which key combination starts a new line within the same paragraph?

A Enter

B Shift + Enter ✓

C Tab

D Ctrl + Enter

Correct Answer: **B** ✓ Shift + Enter

63 In MS Excel, a selected group of cells is referred to as a:

A Range ✓

B Sheet

C Workbook

D Field

Correct Answer: **A** ✓ Range

64 The intersection of a row and a column in an Excel sheet is called a:

A Cell ✓

B Field

C Box

D Table

Correct Answer: **A** ✓ Cell

65 Which keyboard shortcut is used to save a document?

A Ctrl + S ✓

B Ctrl + P

C Ctrl + N

D Ctrl + O

Correct Answer: **A** ✓ Ctrl + S

66 Which keyboard shortcut is used to copy selected text?

A Ctrl + V

B Ctrl + C ✓

C Ctrl + X

D Ctrl + Z

Correct Answer: B ✓ Ctrl + C

67 Which Excel function is used to add together a range of numbers?

A AVERAGE

B SUM ✓

C COUNT

D ADD

Correct Answer: B ✓ SUM

68 MS PowerPoint files are saved (by default, modern format) with the extension:

A .pptx ✓

B .docx

C .xlsx

D .ppt only

Correct Answer: A ✓ .pptx

69 Which keyboard shortcut is used to undo the last action?

A Ctrl + Y

B Ctrl + Z ✓

C Ctrl + U

D Ctrl + R

Correct Answer: B ✓ Ctrl + Z

70 Which MS Word feature automatically underlines possible spelling errors?

A AutoCorrect

B Spell Check ✓

C Find and Replace

D Thesaurus

Correct Answer: B ✓ Spell Check

Number Systems & Programming

SECTION 08 | 10 QUESTIONS

71 The number system used internally by digital computers is:

A Decimal

B Binary ✓

C Octal

D Hexadecimal

Correct Answer: B ✓ Binary

72 How many digits/symbols does the binary number system use?

A 8

B 10

C 2 ✓

D 16

Correct Answer: C ✓ 2

73 How many digits/symbols does the hexadecimal number system use?

A 8

B 10

C 16 ✓

D 2

Correct Answer: C ✓ 16

74 Which of the following is a high-level programming language?

A Assembly Language

B Machine Language

C C++ ✓

D Binary Code

Correct Answer: C ✓ C++

75 Which language is closest to machine language?

A Assembly Language ✓

B Java

C Python

D C++

Correct Answer: A ✓ Assembly Language

76 Who developed the C programming language?

A Dennis Ritchie ✓

B James Gosling

C Bjarne Stroustrup

D Guido van Rossum

Correct Answer: **A** ✓ *Dennis Ritchie*

77 Who developed the Java programming language?

A Dennis Ritchie

B James Gosling ✓

C Bjarne Stroustrup

D Guido van Rossum

Correct Answer: **B** ✓ *James Gosling*

78 The Python programming language was created by:

A Guido van Rossum ✓

B Dennis Ritchie

C James Gosling

D Bjarne Stroustrup

Correct Answer: **A** ✓ *Guido van Rossum*

79 A program that helps detect and fix errors in source code is called a:

A Compiler

B Debugger ✓

C Editor

D Translator

Correct Answer: **B** ✓ *Debugger*

80 The decimal equivalent of the binary number 1010 is:

A 8

B 10 ✓

C 12

D 9

Correct Answer: **B** ✓ *10*

Abbreviations & Key Terms

SECTION 09 | 10 QUESTIONS

81 PDF stands for:

- A Portable Document Format** ✓
- B Personal Document File
- C Printable Document Format
- D Portable Data Format

Correct Answer: **A** ✓ *Portable Document Format*

82 USB stands for:

- A Universal Serial Bus** ✓
- B United Serial Bus
- C Universal System Bus
- D Unique Serial Bus

Correct Answer: **A** ✓ *Universal Serial Bus*

83 GUI stands for:

- A Graphical User Interface** ✓
- B General User Interface
- C Graphic Unit Interface
- D General Unit Interface

Correct Answer: **A** ✓ *Graphical User Interface*

84 PNG stands for:

- A Portable Network Graphics** ✓
- B Personal Network Graphics
- C Printable Network Graphics
- D Portable New Graphics

Correct Answer: **A** ✓ *Portable Network Graphics*

85 In CPU speed, 'GHz' stands for:

- A Gigahertz** ✓
- B Gigahour
- C Gigahash
- D Global Hertz

Correct Answer: **A** ✓ *Gigahertz*

86 Which term describes a malicious self-replicating program that can corrupt data?

A Browser

B Virus ✓

C Compiler

D Driver

Correct Answer: B ✓ Virus

87 LED stands for:

A Light Emitting Diode ✓

B Light Emitting Device

C Liquid Emitting Diode

D Light Electric Diode

Correct Answer: A ✓ Light Emitting Diode

88 SSD stands for:

A Solid State Drive ✓

B Solid System Drive

C Single State Drive

D Storage System Drive

Correct Answer: A ✓ Solid State Drive

89 JPEG stands for:

A Joint Photographic Experts Group ✓

B Joint Photo Experts Group

C Java Photographic Experts Group

D Joint Picture Experts Group

Correct Answer: A ✓ Joint Photographic Experts Group

90 ASCII stands for:

A American Standard Code for Information Interchange ✓

B American System Code for Information Interchange

C American Standard Code for Internal Information

D American Standard Computer Information Interchange

Correct Answer: A ✓ American Standard Code for Information Interchange

Latest Trends & General Awareness

SECTION 10 | 10 QUESTIONS

91 Cloud computing refers to:

A Storing data only on a local hard disk

B Storing and accessing data/services over the internet ✓

C A weather prediction system

D A type of printer

Correct Answer: **B** ✓ *Storing and accessing data/services over the internet*

92 Which company developed the Windows operating system?

A Apple

B Microsoft ✓

C IBM

D Google

Correct Answer: **B** ✓ *Microsoft*

93 Which company developed the Android operating system?

A Apple

B Microsoft

C Google ✓

D Samsung

Correct Answer: **C** ✓ *Google*

94 A computer virus is best described as a type of:

A Hardware component

B Malicious software ✓

C Antivirus program

D Operating system

Correct Answer: **B** ✓ *Malicious software*

95 A firewall is primarily used to:

A Increase internet speed

B Protect a network from unauthorized access ✓

C Print documents faster

D Store backup data

Correct Answer: **B** ✓ *Protect a network from unauthorized access*

96 Which of the following is a social media platform?

A Facebook ✓

B MS Excel

C Windows

D Photoshop

Correct Answer: **A** ✓ Facebook

97 Artificial Intelligence enables computers to:

A Only perform basic calculations

B Mimic human intelligence and aid decision-making ✓

C Only store data

D Only print documents

Correct Answer: **B** ✓ Mimic human intelligence and aid decision-making

98 The popular chatbot ChatGPT was developed by:

A Google

B OpenAI ✓

C Microsoft

D Anthropic

Correct Answer: **B** ✓ OpenAI

99 Wi-Fi technology is primarily used for:

A Wired data transfer only

B Wireless data transfer and internet access ✓

C Printing documents

D Saving files permanently

Correct Answer: **B** ✓ Wireless data transfer and internet access

100 A computer that provides resources/services to other computers on a network is called a:

A Client

B Server ✓

C Node

D Terminal

Correct Answer: **B** ✓ Server